

SECONDARY CLARIFIER REHABILITATION  
FOR  
CITY OF PLYMOUTH  
WASTEWATER TREATMENT PLANT  
PLYMOUTH, WISCONSIN

INDEX TO DRAWINGS

DWG NO.	TYPE	DRAWING DESCRIPTION
G-1	GENERAL	ABBREVIATIONS LEGEND
G-2	GENERAL	SECTION AND DETAIL IDENTIFICATION
G-3	GENERAL	PROJECT IDENTIFICATION PLAN
M-1	MECHANICAL	PLAN AND SECTION

DRAWINGS PREPARED BY

Mead

&Hunt

6737 West Washington Street, Suite 3500  
Milwaukee, WI 53214-5648  
T 800.748.7423 | meadhunt.com

PROJECT ADDRESS

CITY OF PLYMOUTH  
WASTEWATER TREATMENT PLANT  
COUNTY ROAD PP  
PLYMOUTH, WISCONSIN 53073

VICINITY MAP



FOR BIDDING AND CONSTRUCTION  
SEPTEMBER 2025



AT		C TO C	CENTER TO CENTER	HD	HUB DRAIN	OC	ON CENTER	SHS	FOLD-UP SHOWER SEAT
AAD	AUTOMATIC CONTROL AIR DAMPER	CTOP	COUNTERTOP	HONR	HARDENER	OD	OUTSIDE DIAMETER	SHTG	SHEETING
A/B	AERATION BASIN	CTR	CENTER	HDR	HEADER	OD	OVERFLOW DRAIN	S.I.	SUPER IMPOSED
AB	ANCHOR BOLT	CTRD	CENTERED	HGT	HEIGHT	OF	OUTSIDE FACE	SIM	SIMILAR
ABDN	ABANDONED	CU FT	CUBIC FEET	HM	HOLLOW METAL	O/H	OVERHEAD	SLV	SHORT LEG VERTICAL
ACBD	ACOUSTICAL BOARD	CUH	CABINET UNIT HEATER	HO	HAND OPERATED			S.O.	SHUTOFF
ACC	AIR COOLED COMPRESSOR/CONDENSING UNIT	CVA	CHECK VALVE	HORIZ	HORIZONTAL	OHDR	OVERHEAD DOOR	SPECD	SPECIFIED
ACST	ACOUSTICAL TILE	△	CENTRAL ANGLE	HP	HORSEPOWER	OPNG	OPENING	SPECS	SPECIFICATIONS
ACT	ACOUSTICAL			HR	HOOR	OPP	OPPOSITE	SPG	SPACING
AD	AREA DRAIN	DBA	DEFORMED BAR ANCHOR	HVAC	HEATING, VENTILATING, & AIR CONDITIONING	ORIG	ORIGINAL	SQ	SQUARE
ADDL	ADDITIONAL	DBL	DOUBLE	HWP	HOT WATER PUMP	OSHA	OCCUPATIONAL SAFETY AND HEALTH ACT	SQF	SEAMLESS QUARTZ FLOORING
ADJ	ADJACENT	DECHLOR	DECHLORINATION	HWY	HIGHWAY	O TO O	OUT TO OUT	SS	SUBSTATION
AFF	ABOVE FINISHED FLOOR	DEMT	DEMOLISH, DEMOLITION	HX	HEAT EXCHANGER	OZ	OUNCE	SSTL	STAINLESS STEEL
AHR	ANCHOR	DET	DETAIL	HYD	HYDRANT			ST	SHUNT TRIP
AL	ALUMINUM	DH	DEHUMIDIFIER			PAWS	PLASTIC ADHESIVE WATER STOP	STA	STATION
ALTN	ALTERNATE	DIA	DIAMETER	I&C	INSTRUMENTATION AND CONTROL	P&ID	PROCESS AND INSTRUMENTATION DIAGRAM	STD	STANDARD
ANOD	ANODIZED	DIAG	DIAGONAL	ID	INSIDE DIAMETER	PBX	PULL BOX	STIF	STIFFENER
APPROX	APPROXIMATE	DIM	DIMENSION	IE	INVERT ELEVATION	PC	POINT OF CURVATURE	STOR	STORAGE
APVD	APPROVED	DIP	DUCTILE IRON PIPE	IF	INSIDE FACE	P/C	PRIMARY CLARIFIERS	STR	STRAIGHT
ARCH	ARCHITECTURAL	DIR	DIRECTION	IG	INSULATING GLASS	PCJ	PARTIAL CONTRACTION JOINT	STRUCT	STRUCTURAL
AS	AIR SCRUBBER	DISCH	DISCHARGE	INL	INCHES	PE	PLAIN END	STL	STEEL
ASPH	ASPHALT	DM	DIGITAL METER	INFL	INFLUENT	PF	PROPELLER FAN	SUSP	SUSPENDED
ASSY	ASSEMBLY	DN	DOWN	INSTL	INSTALL	PH	PHASE	SYM	SYMMETRICAL
ASU	CENTRAL STATION AIR HANDLING UNIT	DNW	DOWN	INSUL	INSULATION	PI	POINT OF INTERSECTION	SYS	SYSTEM
AUTO	AUTOMATIC	DRWR	DRAWER	INVT	INVERT	PJF	PREMOLDED JOINT FILLER		
AUX	AUXILIARY	DS	DOWNSPOUT	ITG	INSULATED TEMPERED GLASS	PL	PROPERTY LINE	T	TANGENT LENGTH
AVG	AVERAGE	DWG	DRAWING			PL	PLATE (STRUCT)	T	THERMOSTAT
		DWL	DOWEL	JAN.	JANITOR	PLAM	PLASTIC LAMINATE	T	TREAD
B	BOILER	E	EAST	JB	JUNCTION BOX	PLAS	PLASTER	T&B	TOP AND BOTTOM
BB	BAD BRICK	E	EXTERNAL	JT	JOINT	PLBG	PLUMBING	T&G	TONGUE AND GROOVE
BC	BOOSTER COIL	EA	EACH			PLYWD	PLYWOOD	TOC	TOP OF CONCRETE
BD	BOARD	ECC	ECCENTRIC	KG	KILOGRAM	POC	POINT ON CURVE	TOW	TOP OF WALL
BDRY	BOUNDARY	EDH	ELECTRIC DUCT HEATER	KM	KILOMETER	POS	POSITION	TEMP	TEMPERATURE
BETW	BETWEEN	EF	EACH FACE	KVA	KILOVOLT-AMPERE	POT	POINT ON TANGENT	TF	TOP FACE
BF	BOTTOM FACE	EFL	EFFLUENT	L	LENGTH	PR	PAIR	TG	TEMPERED GLASS
BFP	BACK FLOW PREVENTOR	EHD	ELECTRIC HAIR DRYER	L	LENGTH OF CURVE	PRO	PROPOSED	THK	THICK
BFVA	BUTTERFLY VALVE	EL	ELEVATION	L	ANGLE	PRCST	PRECAST	THD	THREADED
BIT	BITUMINOUS	ELB	ELBOW	LAM	LABORATORY	PREFAB	PREFABRICATED	TO	TOP OF
BLDG	BUILDING	ELEC	ELECTRICAL	LAM	LAMINATE	PREP	PREPARATION	TOS	TOP OF STEEL
BLVD	BOULEVARD	ELEV	ELEVATOR	LAV	LAVATORY	PS	PUMP STATION	TOT	TOTAL
BM	BEAM	ENCL	ENCLOSURE, ENCLOSED	LB	POUNDS	PSF	POUNDS PER SQUARE FOOT	TP	TOWEL PIN
BM	BENCH MARK	EQ	EQUAL	LB/D	POUNDS PER DAY	PSI	POUNDS PER SQUARE INCH	TPD	TONS PER DAY
BOD	BOTTOM OF DUCT	EQ SP	EQUALLY SPACED	LCP	LOCAL CONTROL PANEL	PT	POINT OF TANGENCY	TPI	TURNOUT POINT OF INTERSECTION
BOD 5	BIOCHEMICAL OXYGEN DEMAND (5 DAY TEST)	EQUIP	EQUIPMENT	LCUS	LOAD CENTER UNIT SUBSTATION	PTD	PAPER TOWEL DISPENSER	TRANSV	TRANSVERSE
		EW	EACH WAY	LG	LONG	PTD/R	PAPER TOWEL DISPENSER/RECEPTACLE	TSS	TOTAL SUSPENDED SOLIDS
BOP	BOTTOM OF PIPE	EWC	ELECTRIC WATER COOLER	LH	LEFT HAND	PVA	PLUG VALVE	TTC	TELEPHONE TERMINAL CABINET
BOT	BOTTOM	EXCAV	EXCAVATE, EXCAVATION	LIW	LOAD INDICATING WASHERS	PVC	POINT OF VERTICAL CURVATURE	TTD	TOILET TISSUE DISPENSER
BRG	BEARING	EXF	EXHAUST FAN	LLV	LONG LEG VERTICAL	PVC	POLYVINYL CHLORIDE	TYP	TYPICAL
BVA	BALL VALVE	EXP JT	EXPANSION JOINT	LNTL	LINTEL	PVI	POINT OF VERTICAL INTERSECTION	UF	UTILITY FAN
		EXST	EXISTING	LONG	LONGITUDINAL	PVMT	PAVEMENT	UG	UNDERGROUND
CAB.	CABINET	EXT	EXTERIOR	LOS	LOCKOUT STOP PUSH BUTTON	PVT	POINT OF VERTICAL TANGENCY	UHE	ELECTRIC UNIT HEATER
CAF	CABINET FAN	FAB	FABRICATION	LPT	LOW POINT	PWS	PVC WATER STOP	UHG	GAS UNIT HEATER
CARP.	CARPET	FACIL	FACILITY	LR	LONG RADIUS	PWW	PROCESS WASTEWATER	UHW	HOT WATER UNIT HEATER
CB	CATCH BASIN	FB	FLAT BAR	LT	LIGHT			UND	UNLESS NOTED OTHERWISE
CC	COOLING COIL	FCTY,FACT.	FACTORY	LV	LABORATORY VACUUM	QC	QUALITY CONTROL	UPS	UNINTERRUPTIBLE POWER SUPPLY
C/C	CHLORINE CONTACT	FD	FLOOR DRAIN	LV	LOW VOLTAGE	QDRNT	QUADRANT	USGS	UNITED STATES GEOLOGICAL SURVEY
CEF	CEILING EXHAUST FAN	FDN	FOUNDATION						
CEM	CEMENT	FDR	FEEDER	M	METER	R	R-VALUE (INSULATION)	V	VENT
CEM PLAS	CEMENT PLASTER	FEXT	FIRE EXTINGUISHER	M & BH	MOP & BROOM HOLDER	R OR RAD	RADIUS	VA	VALVE
CF	CENTRIFUGAL FAN	F FL EL	FINISHED FLOOR ELEVATION	MAN	MANUAL	R	RISER	VAC	VACUUM
CFM	CUBIC FEET PER MINUTE	FLL	FLOW LINE ELEVATION	MATL	MATERIAL	RC	REINFORCED CONCRETE	VB	VINYL BASE
CG	CORNER GUARD	FLEX	FLEXIBLE	MAX	MAXIMUM	RCP	REINFORCED CONCRETE PIPE	VCP	VITRIFIED CLAY PIPE
CH	COAT HOOK	FLG	FLANGE	MB	MACHINE BOLT	RD	ROOF DRAIN	VCT	VINYL COMPOSITION TILE
CHEM	CHEMICAL	FLR	FLOOR	MCC	MOTOR CONTROL CENTER	REC	RECESSED EXTINGUISHER CABINET	VD	MANUAL AIR VOLUME DAMPER
CHKD	CHECKERED	FNSH	FINISH	MD	MOTORIZED DAMPER	RED	REDUCER	VE	VEHICLE EXHAUST SYSTEM
CI	CAST IRON	FP	FIN TUBE CONVECTOR	MEMB	MEMBRANE	REF	REFERENCE	VERT	VERTICAL
CJ	CONSTRUCTION JOINT	FR	FIRE RATED	MECH	MECHANICAL	REFR	REFRIGERATOR	VIF	VERIFY IN FIELD
CL	CENTER LINE	FRP	FIBERGLASS REINFORCED PLASTIC	MEZZ	MEZZANINE	REHAB	REHABILITATION	VOL	VOLUME
CLG	CEILING	FT	FEET, FOOT	MFG	MANUFACTURING	REINF	REINFORCE	VOLT	VOLTAGE
CLO	CLOSET	F TO F	FACE TO FACE	MFR	MANUFACTURER	REQD	REQUIRED	VP	VAPOR PROOF
CLP	CLAY PIPE	FTG	FOOTING	MGD	MILLION GALLONS PER DAY	RESIL	RESILIENT	VTR	VENT THRU ROOF
CLR	CLEAR	FUT	FUTURE	MG/L	MILLIGRAMS PER LITRE	REV	REVISION	VVC	VINYL WALL COVERING
CL2	CHLORINE	FVNR	FULL VOLTAGE NON-REVERSING	MH	MANHOLE	RF	RETURN FAN		
CMP	CORRUGATED METAL PIPE	FVR	FULL VOLTAGE REVERSING	MIN	MINIMUM	RH	RIGHT HAND	W	WEST
CMU	CONCRETE MASONRY UNITS			MIR	MIRROR	RM	ROOM	W	WIDE
CO	CLEANOUT	G	GRAM	MISC	MISCELLANEOUS	RND	ROUND	W/	WITH
COD	CHEMICAL OXYGEN DEMAND	GA	GAUGE	MJ	MECHANICAL JOINT	RO	ROUGH OPENING	WD	WOOD
COL	COLUMN	GAL	GALLON	MLSS	MIXED LIQUOR SUSPENDED SOLIDS	RR	RAILROAD	WE	WALL EXHAUSTER
COMM	COMMUNICATION	GALV	GALVANIZED	MLVSS	MIXED LIQUOR VOLATILE SUSPENDED SOLIDS	RST	REINFORCING STEEL	WG	WIRE GLASS
CONC	CONCRETE	GALVS	GALVANIZED STEEL			RVA	RELIEF VALVE	WH	WATER HEATER
CONN	CONNECTION	GB	GRAB BAR	MM	MONTH	S	SOUTH	WK	WEEK
CONST	CONSTRUCTION	GC	GENERAL CONTRACTOR	MO	MASONRY OPENING	SAT	SUSPENDED ACOUSTICAL TILE	WP	WORK POINT
CONT	CONTINUOUS	GEN	GENERAL	MON	MONUMENT	SB	SOIL BORING	WR	WASTE RECEPTACLE
CONT JT	CONTROL JOINT	GLVA	GLOBE VALVE	MTG	MOUNTING	SC	SHOWER CURTAIN	WR GWB	WATER RESISTANT GYPSUM WALLBOARD
COR	CORNER	GPD	GALLONS PER DAY	MTL	METAL	S/C	SECONDARY CLARIFIERS	WS	WATER STOP OR WATERSURFACE
CP	CONCRETE PIPE	GRTC	GRATING	MTRG	METERING	SCHED	SCHEDULE	WS	WELDED STEEL
CPLG	COUPLING	GVL	GRAVEL			SCR	SHOWER CURTAIN ROD	WT	WEIGHT
CT	CERAMIC TILE	GVA	GATE VALVE	N	NORTH	SD	SOAP DISPENSER	WWF	WELDED WIRE FABRIC
CPVC	CHLORINATED POLYVINYL CHLORIDE	GWB	GYPSUM WALLBOARD	NATL	NATIONAL	SD/GB	SOAP DISH & GRAB BAR		
		GYP PLAS	GYPSUM PLASTER	NC	NORMALLY CLOSED	SEAL.	SEALER	XFMR	TRANSFORMER
				NIC	NOT IN CONTRACT	SECT	SECTION		
		H	HEIGHT	NO	NORMALLY OPEN	SF	SUPPLY FAN	YD	YARD
		HSA	HEADED STUD ANCHOR	NO	NORMALLY OPEN	SG	SAFETY GLASS	YR	YEAR
		HB	HOSE BIBB	NOM	NOMINAL	SHT	SHEET		
		HC	HEATING COIL	NORM	NORMAL				
		HCR	HAT & COAT RACK	NTS	NOT TO SCALE				
				NV	NAPKIN VENDOR				

LEGEND		SERVICE	
ACL	ACETYLENE GAS	SEP	SEPTAGE
AE	AERATED EFFLUENT	SHC	SODIUM HYPOCHLORITE
AG	ARGON GAS	SHD	SODIUM HYDROXIDE
AHP	AIR, HIGH PRESSURE PROCESS	SO	SKIMMED OIL
AI	INSTRUMENT AIR	SNT	SUPERNATANT
AIR	AIR, LABORATORY	SPD	SUMP PUMP DISCHARGE
ALP	AIR, LOW PRESSURE PROCESS	SS	SANITARY SEWER
APOLD	ANIONIC POLYMER	ST	STORM SEWER
ARD	ACID RESISTANT DRAIN	SSM	SECONDARY SCUM
ARY	ACID RESISTANT VENT	SW	SOFTENED WATER
BC	BIOGAS	TA	TREATED AIR
BWV	BACKWASH WASTEWATER	TAS	THICKENED ACTIVATED SLUDGE
BTF	BATCH TANK FEED	TEFL	TREATMENT EFFLUENT
BTSAM	BATCH TANK SAMPLE	TDS	THICKENED DIGESTED SLUDGE
CG	CHLORINE GAS (PRESSURE)	TPSD	THICKENED PRIMARY SLUDGE
CGV	CHLORINE GAS (VACUUM)	V	VENT
CL	CHLORINE LIQUID (PRESSURE)	VAC	VACUUM
CPOLD	CATIONIC POLYMER	WAS	WASTE ACTIVATED SLUDGE
CS	CHLORINE SOLUTION	WOI	WASTE OIL
CSM	CONCENTRATED SCUM	W	WATER (POTABLE)
CPSD	CHEMICAL SUMP PUMP DISCHARGE	WWO	WET WEATHER OUTFALL
CSE	COMBINED SEWER EFFLUENT		
CSO	COMBINED SEWER OVERFLOW		
CSR	COMBINED SEWER RETURN		
CW	COLD WATER		
D	DRAIN, SANITARY		
DAFEF	DISSOLVED AIR FLOATATION EFFLUENT		
DAFF	DISSOLVED AIR FLOATATION FEED		
DEF	DIATOMACEOUS EARTH FEED		
DG	DIGESTER GAS		
DIW	DEIONIZED WATER		
DMW	DEMINERALIZED WATER		
DP	DRY POLYMER		
DS	DIGESTED SLUDGE		
DT	DRAIN TILE		
DW	DISTILLED WATER		
EMDV	EMERGENCY DIVERSION		
F	FILTRATE		
FC	FERRIC CHLORIDE		
FESU	FERRIC SULFATE		
FLT	FLOAT		
FO	FIBER OPTIC		
FP	FIRE PROTECTION		
FPF	FILTER PRESS FEED		
G	NATURAL GAS		
GR	GRIT SLURRY		
GTE	GRAVITY THICKENER EFFLUENT		
H	HYDROGEN GAS		
HCL	HYDROGEN CHLORIDE GAS		
HE	HELIUM GAS		
HPHW	HIGH PRESSURE HOT WATER		
HPX	HYDROGEN PEROXIDE		
HW	HOT WATER, DOMESTIC		
HWCS	HOT WATER CLEAN SYSTEM		
HWR	HOT WATER RETURN		
HWS	HOT WATER SUPPLY		
HWWR	HEATED WASTEWATER RETURN		
HWWS	HEATED WASTEWATER SUPPLY		
HRR	HEAT RECLAIM RETURN		
HRS	HEAT RECLAIM SUPPLY		
HRSO	HEATED RECIRCULATED SLUDGE		
IW0	INDUSTRIAL WASTE FLOOR DRAINS		
IW2	INDUSTRIAL WASTE METALS		
IW0	INDUSTRIAL WASTE OIL		
IWR	INDUSTRIAL WASTE RETURN		
LISL	LIME SLURRY		
LPO	LIQUID POLYMER		
LSW	LOW STRENGTH WASTE		
ML	MIXED LIQUOR		
N	NITROGEN GAS		
NA	SODIUM HYDROXIDE		
NPW	NON-POTABLE WATER		
O	OXYGEN GAS		
OA	ODOROUS AIR		
OF	OVERFLOW		
OSLDG	OILY SLUDGE		
P	PROPANE GAS		
PD	PLANT DRAIN		
PE	PRIMARY EFFLUENT		
PI	PRIMARY INFLUENT		
PLE	PLANT EFFLUENT		
PO	POLYMER SOLUTION		
PSD	PRIMARY SLUDGE		
PSM	PRIMARY SCUM		
PWW	PROCESS WASTEWATER		
RAS	RETURN ACTIVATED SLUDGE		
RD	ROOF DRAIN		
RFL	REFRIGERANT LIQUID		
RFS	REFRIGERANT SUCTION		
RHW	RECIRCULATED HOT WATER		
RS	RAW SEWAGE		
RSD	RECIRCULATED SLUDGE		
RWW	RAW WASTE WATER		
SA	SAMPLE		
SAN	SANITARY DRAIN		
SAS	SULFURIC ACID		
SBS	SODIUM BISULFITE		
SBT	SUBNANANT		
SCN	SCREENINGS		
SDG	SULFUR DIOXIDE GAS (PRESSURE)		
SDS	SULFUR DIOXIDE SOLUTION		
SDV	SULFUR DIOXIDE GAS (VACUUM)		
SE	SECONDARY EFFLUENT		

X:\P4665675\230564.0\PT\TECH\PCAD\PC\ar\Fier\_Rehab\PC00-230564r-00.dwg Sep 08,2025 - 2:38pm 02976



6737 West Washington Street, Suite 3500  
Milwaukee, WI 53214-5648  
T 800.748.7423 | meadhunt.com

VERIFY SCALE	
BAR IS ONE INCH ON ORIGINAL DRAWING.	0 1"
IF NOT ONE INCH ON THIS SHEET, ADJUST SCALES ACCORDINGLY.	

DSGN	PDP
DR	PDP
CHK	ZAH
APVD	JRB

--	9-9-25
NO.	DATE

FOR BIDDING AND CONSTRUCTION	
REVISION	

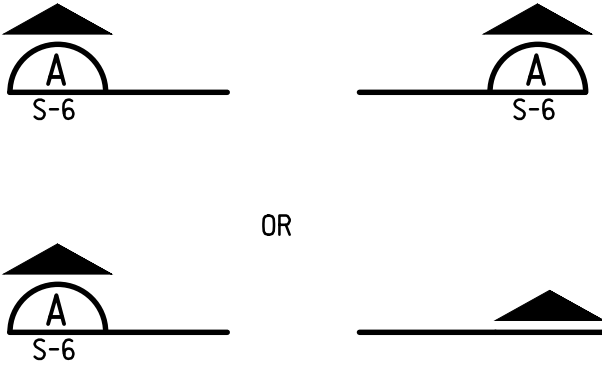
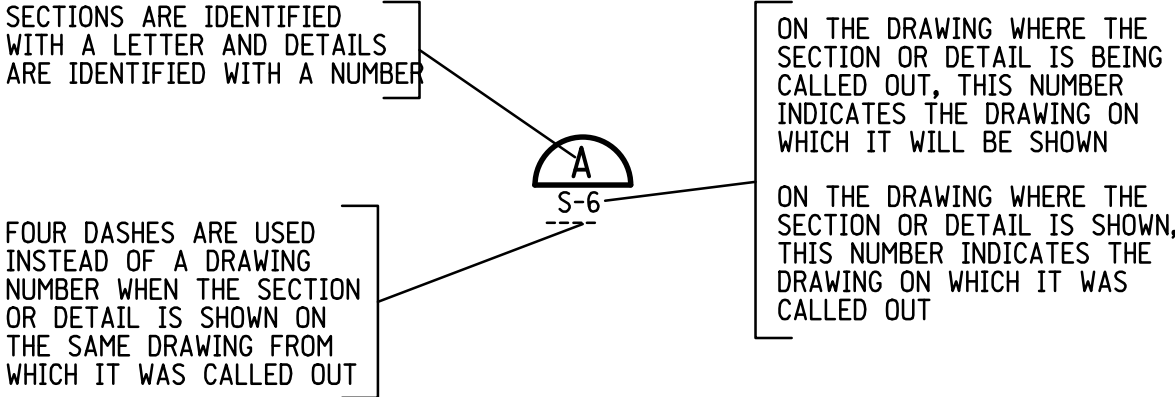
ZAH	JRB
BY	APVD

SECONDARY CLARIFIER REHAB  
CITY OF PLYMOUTH  
WASTEWATER TREATMENT PLANT  
PLYMOUTH, WISCONSIN

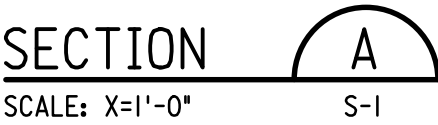
GENERAL  
SECTION AND DETAIL IDENTIFICATION

SHEET NO.	--
DWG NO.	G-2
DATE	SEP 2025
PROJ NO.	230564

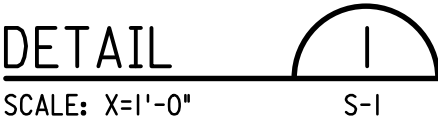
SECTION AND DETAIL IDENTIFICATION



TYPICAL SECTION CUT



TYPICAL SECTION TITLE



TYPICAL DETAIL TITLE

STANDARD DETAIL IDENTIFICATION

- 02000 - 02999 - CIVIL/SITEWORK
- 03000 - 03999 - CONCRETE
- 04000 - 04999 - MASONRY
- 05000 - 05999 - METALS
- 06000 - 06999 - WOOD AND PLASTIC
- 07000 - 07999 - THERMAL AND MOISTURE CONTROL
- 08000 - 08999 - DOORS AND WINDOWS
- 09000 - 09999 - FINISHES
- 10000 - 10999 - SPECIALTIES
- 11000 - 11999 - EQUIPMENT
- 12000 - 12999 - FURNISHINGS
- 13000 - 13999 - INSTRUMENTATION AND CONTROL
- 14000 - 14999 - CONVEYING SYSTEMS
- 15000 - 15999 - MECHANICAL
- 16000 - 16999 - ELECTRICAL
- 17000 - 17999 - HVAC

(15102) USED WHEN CALLING OUT A STANDARD DETAIL

(15102) USED IN TITLE OF STANDARD DETAIL WHERE IT IS DRAWN

DRAWING NUMBER DESIGNATION

- DRAWING NUMBER
- A-1
- DISCIPLINE (BY LETTER)
- A ARCHITECTURAL
  - C CIVIL
  - D STANDARD DETAILS AND SCHEDULES
  - E ELECTRICAL
  - F FIRE PROTECTION
  - G GENERAL
  - H HVAC
  - I PROCESS AND INSTRUMENTATION
  - M MECHANICAL
  - N INSTRUMENTATION
  - P PLUMBING
  - R REMOVAL/DEMOLITION
  - S STRUCTURAL

DUAL LETTERS INDICATE COMBINED DISCIPLINES

AS-1

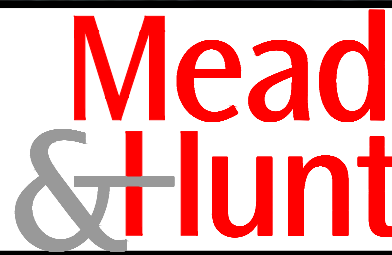
NOTE:  
THIS IS A STANDARD LEGEND SHEET, THEREFORE SOME SYMBOLS OR ABBREVIATIONS MAY APPEAR ON THIS SHEET AND NOT ON THE PLANS.





PROJECT LOCATION →

HIGHWAY PP



6737 West Washington Street, Suite 3500  
Milwaukee, WI 53214-5648  
T 800.748.7423 | meadhunt.com

VERIFY SCALE		DSGN	PDP	NO.	DATE	FOR BIDDING AND CONSTRUCTION REVISION	ZAH BY	JRB APVD
BAR IS ONE INCH ON ORIGINAL DRAWING.		DR	PDP					
0 1"		CHK	ZAH					
IF NOT ONE INCH ON THIS SHEET, ADJUST SCALES ACCORDINGLY.		APVD	JRB					

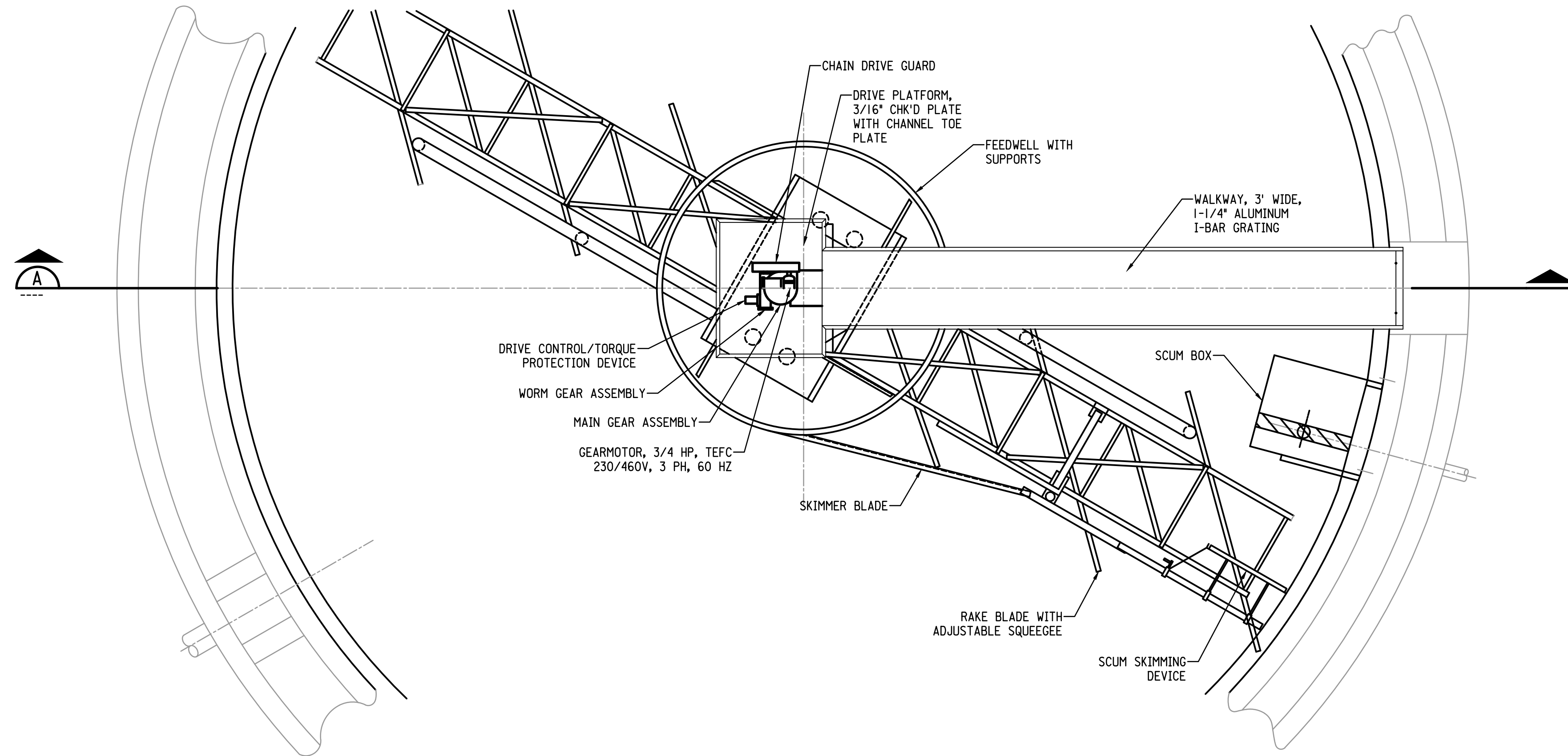
SECONDARY CLARIFIER REHAB  
CITY OF PLYMOUTH  
WASTEWATER TREATMENT PLANT  
PLYMOUTH, WISCONSIN

GENERAL  
PROJECT IDENTIFICATION PLAN

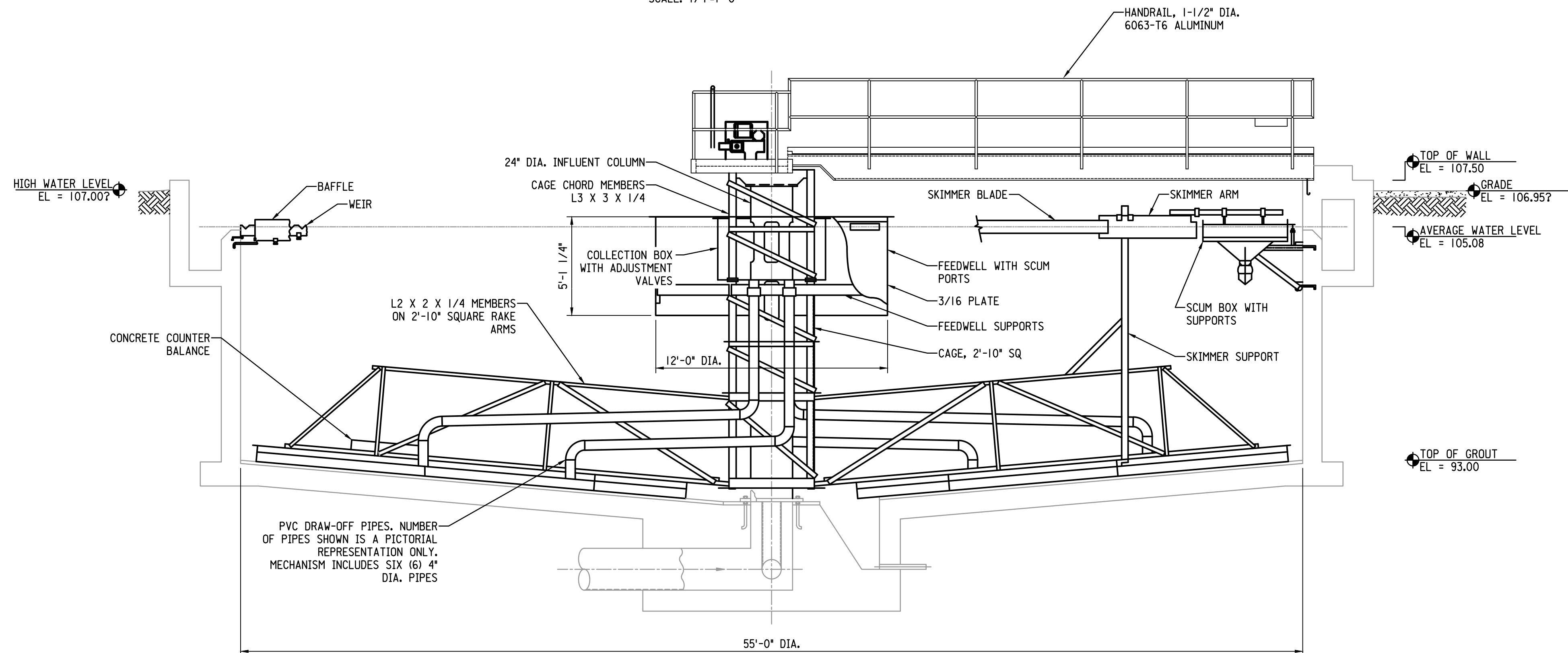
SHEET NO.	--
DWG NO.	G-3
DATE	SEP 2025
PROJ NO.	230564

X:\P466657\230564\01\PT\TECH\PCAD\PC1\ar\Fier- Rehab\PC00-230564r-00.dwg Sep 08, 2025 - 2:38pm 02576





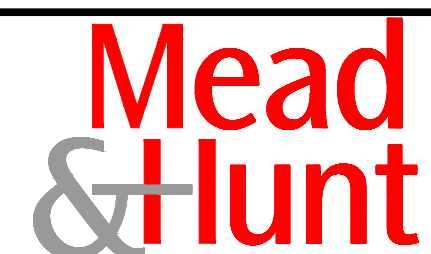
**MECHANICAL PLAN VIEW**  
SCALE: 1/4"=1'-0"



**SECTION A**  
SCALE: 1/4"=1'-0"

**PLAN NOTES:**

- EXISTING INFORMATION SHOWN GRAY SCALE. DETAILED INFORMATION SHOWN HAS NOT BEEN CHECKED FOR ACCURACY. THE CONTRACTOR SHALL FIELD VERIFY ALL SIZES AND ELEVATIONS NECESSARY TO COMPLETE WORK SHOWN ON THE DRAWINGS AND AS SPECIFIED.
- IT IS THE INTENT OF THESE DRAWINGS THAT A COMPLETE WORKING SYSTEM PROPERLY TESTED, WILL BE OPERATIONAL UPON COMPLETION OF THE WORK AS DEFINED IN SECTIONS 11600 AND 01820.
- CONFLICT BETWEEN DRAWINGS AND SPECIFICATIONS SHALL BE BROUGHT TO THE ATTENTION OF THE ENGINEER PRIOR TO BID OPENING.
- DRIVE UNIT, INCLUDING GEAR MOTOR, CHAIN DRIVE, WORM GEAR ASSEMBLY, DRIVE CONTROL/TORQUE PROTECTION DEVICE, AND MAIN GEAR ASSEMBLY TO BE INSPECTED AND REPAIRED AS NEEDED. SEE SPECIFICATION SECTION 11600 FOR REQUIREMENTS.
- FEED WELL, COLLECTION BOX, CAGE, INFLUENT COLUMN, SCUM BOX, RAKE ARMS, AND STRUCTURAL SUPPORTS TO BE REMOVED, CLEANED, INSPECTED, AND COATED. SEE SPECIFICATION SECTION 11600 FOR REQUIREMENTS.
- FEED WELL AND COLLECTION BOX TO BE REPLACED. SEE SPECIFICATION SECTION 11600 FOR REQUIREMENTS.



6737 West Washington Street, Suite 3500  
Milwaukee, WI 53214-5648  
T 800.748.7423 | meadhunt.com

**VERIFY SCALE**  
BAR IS ONE INCH ON ORIGINAL DRAWING.  
0 1"  
IF NOT ONE INCH ON THIS SHEET, ADJUST SCALES ACCORDINGLY.

DSGN	PDP
DR	PDP
CHK	ZAH
APVD	JRB

NO.	DATE
--	9-9-25

FOR BIDDING AND CONSTRUCTION	
REVISION	

ZAH	JRB
BY	APVD

SECONDARY CLARIFIER REHAB  
CITY OF PLYMOUTH  
WASTEWATER TREATMENT PLANT  
PLYMOUTH, WISCONSIN

MECHANICAL  
PLAN AND SECTION

SHEET NO.	--
DWG NO.	M-1
DATE	SEP 2025
PROJ NO.	230564